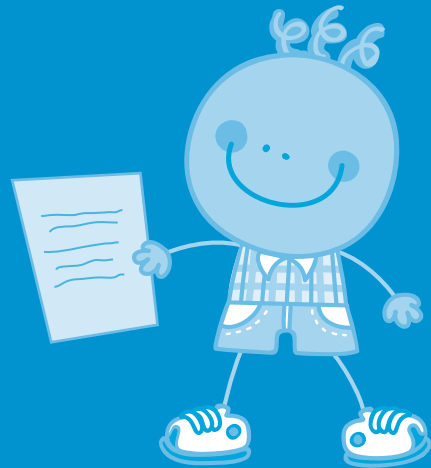


Notes and appointments



My Health and Development Record

name



Government
of South Australia

Useful contacts

Australian Breastfeeding Association

1800 686 268

www.breastfeeding.asn.au

Pregnancy, Birth and Baby Helpline (24 hours)

1800 882 436

healthdirect Australia (24 hours)

1800 022 222

Emergency (Ambulance, Fire or Police)

000

Crisis Care (after hours and weekends)

13 16 11

Mental Health Emergency (24 hours)

13 14 65

Poisons Information Centre (24 hours)

13 11 26

Child and Family Health Service (Mon-Fri)

Appointments 1300 733 606 or www.cyh.com

Raising Children Network

www.raisingchildren.net.au

Parent Helpline

1300 364 100

SA Dental Service

1300 008 222



www.ausgoal.gov.au/creative-commons

© Government of South Australia.
All rights reserved. ISBN: 978-0-7308-7877-3
Printed May 2018.
DECD758



Telephone Interpreter Service 13 14 50